



## Installing the Driver Software

---

### Overview

This guide explains how to install the PictureTel Live200 driver software you have downloaded from PictureTel's Web site. You need to unzip the lv200drv.exe you downloaded from the Web site by double-clicking each file to activate WinZip Self-Extractor. Unzipping the executable files creates the Lv200Drv directory, which contains the driver software used to communicate with the hardware.

Click the following links for complete installation information:

- [Upgrading the software from a previous release](#)
- [Installing the driver software](#)

---

### Upgrading the Software from a Previous Release

If you are upgrading your software from a previous release of Live200, follow these procedures:

- [Save installed system information](#)
- [Remove the current driver software](#)
- [Install the new driver software](#)
- [Install the application software](#)

If you have the previous version of Live200 in your Startup folder, remove it before you continue.

---

### Saving Installed System Information

Save the following information from your current system before you start the upgrade process:

- [ISDN Protocol](#)
  - [Service Profile ID \(SPID\)](#)
  - Live200 Serial Number
- 

## ISDN Protocol

To find the ISDN protocol for your currently installed system:

1. Select Preferences from the Tools menu in the main toolbar.
  2. Click the Hardware Settings tab.
  3. Click the ISDN tab to display your ISDN settings.
  4. Record the the information displayed in the Protocol box.
- 

## SPID

All ISDN protocols except 5ESS Point-to-Point require SPIDs. To find the SPIDs for your currently installed system:

1. Select Preferences from the Tools menu in the main toolbar.
  2. Click the Hardware Settings tab.
  3. Click the ISDN tab to display your ISDN settings.
  4. Record the the information displayed in Service Profile ID boxes (usually the same number). Record the number exactly as shown on the screen, do not add additional alphanumeric characters.
- 

## Live200 Serial Number

The last line of the licensing information contains your serial number. To find the serial number for your currently installed system:

Select About PictureTel LiveWare from the Help menu in the main toolbar.

---

## Removing the Driver Software

To remove the current driver software in preparation for the new install:

1. Start your PC and run Windows 95 without running the Live200 application currently installed.
2. Click the Start button from the Windows 95 desktop.  
The Run dialog box appears.
3. Access **\\Lv200Drv\disk1\Setup200** by typing the path to where you put the directories or by clicking the Browse button to locate the directories. For example:  
**c:\windows\temp\Lv200Drv\disk1\Setup200**

4. Type the words **Remove200Driver** at the end of the path in the Run dialog box. Insert a space between **Setup200** and **Remove200Driver**:  
**c:\windows\temp\Lv200Drv\disk1\Setup200 Remove200Driver**
5. Click OK.  
The Live200 Hardware Setup dialog box appears asking if you want to continue the deinstallation process.
6. Click Yes.  
When the system software has been removed from your system, a dialog box appears asking if you want the deinstall program to restart your computer.
7. Click Yes to restart your computer and complete the deinstallation process.

Your computer restarts. Proceed to [Installing the New Driver Software](#).

---

## Installing the New Driver Software

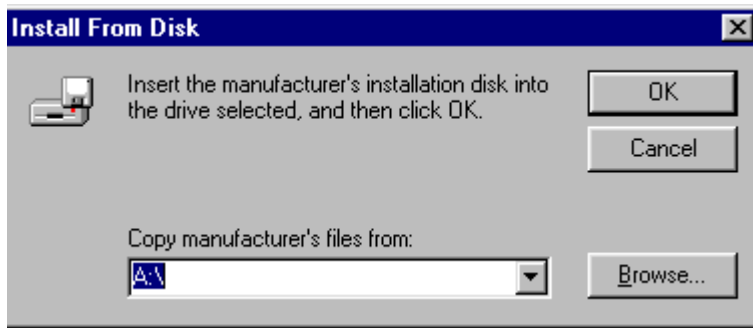
Before you begin the installation process, make sure you know your ISDN numbers and protocol, and Service Profile [Identifier](#) (SPID) numbers if you are using them.

To install the system software:

1. Start your computer after you have installed the Live200 board and components.  
During startup, Windows 95 prompts you to install drivers for the new Plug and Play devices, which are needed for running PictureTel Live200. The New Hardware Found dialog box appears, displaying **PCI Multimedia Device** at the top of the dialog box.



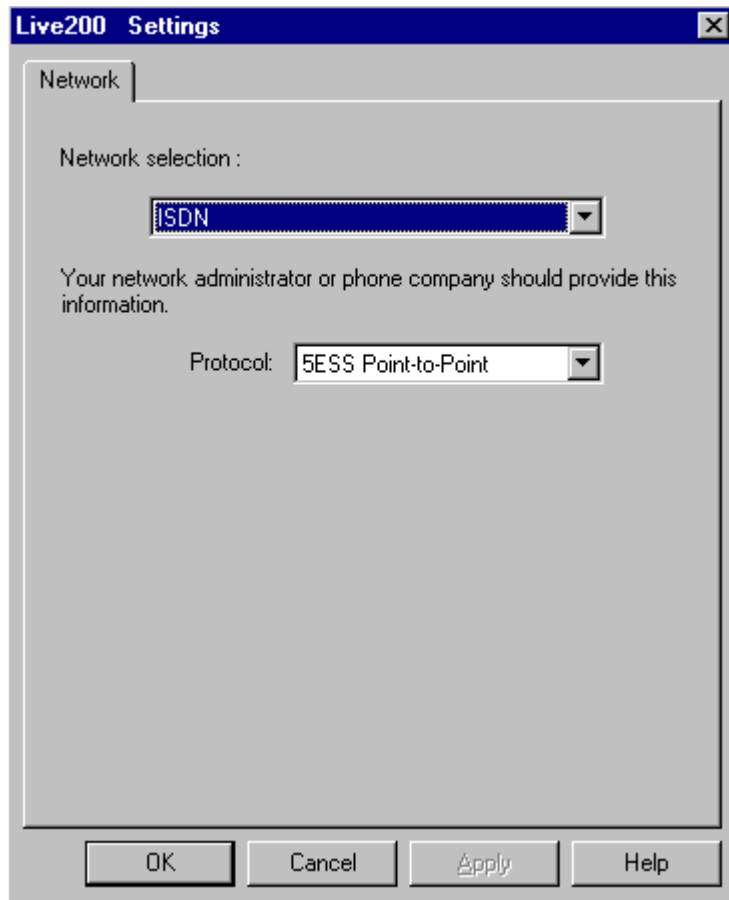
- The **Driver from disk provided by hardware manufacturer** option button is selected by default.
2. Click OK in the New Hardware Found dialog box.  
The Install From Disk dialog box appears.



3. Access the **Lv200Drv** directory by typing the path or by clicking the Browse button to locate it. For example:  
**c:\temp\Lv200Drv**

The Open dialog box appears with **ghound.inf** highlighted.

4. Click OK.  
The Install from Disk dialog box reappears.
5. Check the path and click OK.  
After the files are copied to your hard drive, the Live200 Settings dialog box appears.



6. Select an ISDN protocol and click OK.  
The PictureTel Settings Change dialog box appears.

The default setting is 5ESS Point-to-Point. Contact your ISDN provider to find out the correct protocol to use for your ISDN line.

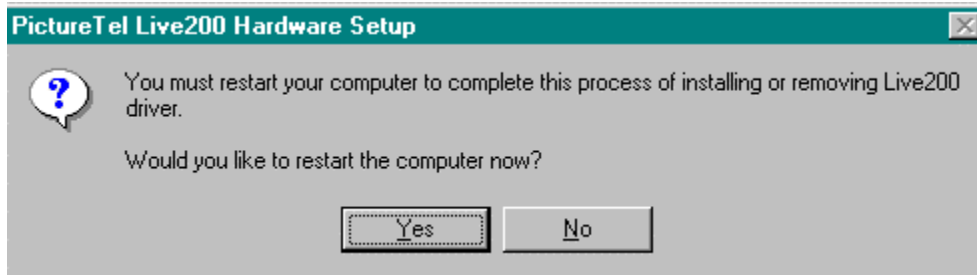
If you select a protocol such as 5ESS Multipoint, you must enter a Service Provider Identification

(SPID).

If you select a protocol such as NI1, you must enter two SPIDs.

If you select a protocol such as Euro-MSN, you must enter Number Type and Number Plan. See the online help or the *PictureTel Live200 Product Guide* for detailed information about ISDN protocols.

Files are copied to your local drive. When the system software installation is complete, the following dialog box appears.



7. Click Yes.

Your computer automatically restarts Windows 95.

Proceed to Installing the Application Software.

---



*Copyright © 1997, PictureTel Corporation. All rights reserved.*