



## Windows 95 Revision B Installation Instructions

---

Follow the instructions in this document if you are installing Live200 1.5 on a PC that runs Windows 95 revision B (OSR2). The Windows 95 version number is listed on the General tab, you can check yours by double-clicking the System icon in the Control Panel.

Click the following links for complete information:

[Upgrading from a Previous Release](#)

[Installing the Driver Software](#)

[Installing the Application Software](#)

---

### Upgrading from a Previous Release

If you are upgrading your software from a previous release of Live200, follow these procedures:

- [Save installed system information](#)
- [Remove the current driver software](#)
- [Install the new driver software](#)
- [Install the application software](#)

If you have the previous version of Live200 in your Startup folder, remove it before you continue.

---

# Saving Installed System Information

Save the following information from your current system before you start the upgrade process:

- [ISDN Protocol](#)
  - [Service Profile ID \(SPID\)](#)
  - Live200 Serial Number
- 

## ISDN Protocol

To find the ISDN protocol for your currently installed system:

1. Select Preferences from the Tools menu in the main toolbar.
  2. Click the Hardware Settings tab.
  3. Click the ISDN tab to display your ISDN settings.
  4. Record the the information displayed in the Protocol box.
- 

## SPID

All ISDN protocols except 5ESS Point-to-Point require SPIDs. To find the SPIDs for your currently installed system:

1. Select Preferences from the Tools menu in the main toolbar.
  2. Click the Hardware Settings tab.
  3. Click the ISDN tab to display your ISDN settings.
  4. Record the the information displayed in Service Profile ID boxes (usually the same number). Record the number exactly as shown on the screen, do not add additional alphanumeric characters.
- 

## Live200 Serial Number

The last line of the licensing information contains your serial number. To find the serial number for your currently installed system:

Select About PictureTel LiveWare from the Help menu in the main toolbar.

---

# Removing the Driver Software

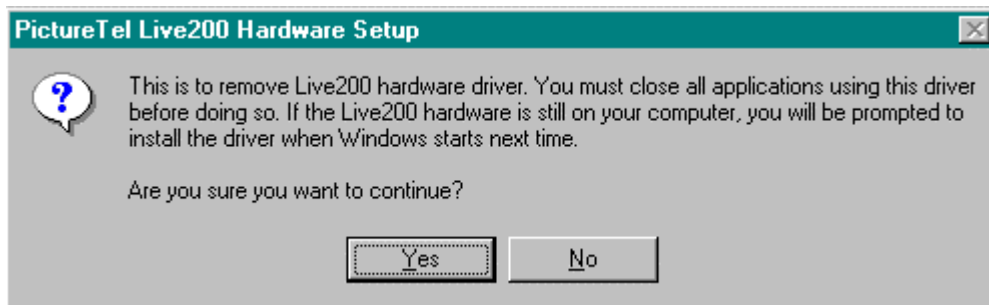
To remove the driver software:

1. Click Run from the Start menu.

The Run dialog box appears.

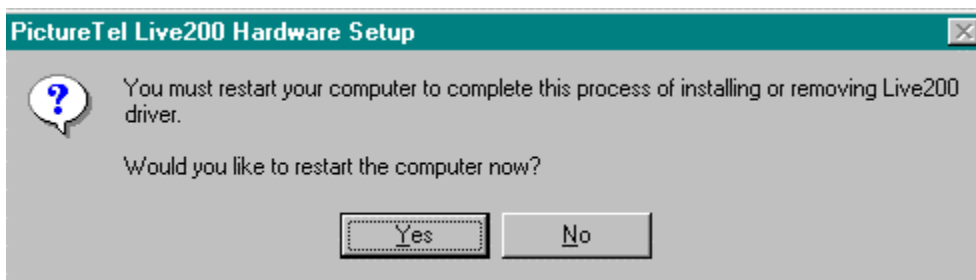
2. Access `\Lv200Drv\disk1\Setup200` by typing the path to where you put the directory or by clicking the Browse button to locate the directory. For example:  
`c:\windows\temp\Lv200Drv\disk1\Setup200`
3. Append **Remove200Driver** at the end of the path in the Run dialog box. Insert a space between **Setup200** and **Remove200Driver**. For example:  
`c:\windows\temp\Lv200Drv\disk1\Setup200 Remove200Driver`
4. Click OK.

The Live200 Hardware Setup dialog box appears asking if you want to continue the deinstallation process.



5. Click Yes.

When the system software has been removed from your system, a dialog box appears asking if you want the deinstall program to restart your computer now. You must restart your computer to complete the process.



6. Click Yes to restart your computer and complete the deinstallation process.

Your computer restarts.

---

# Installing the Driver Software

1. Power on your computer.

The New Hardware Located dialog box appears while the driver database is being created, before the Update Device Driver dialog box is displayed.



2. Click Next.

Windows 95 searches for updated drivers and the Update Device Driver dialog box appears.



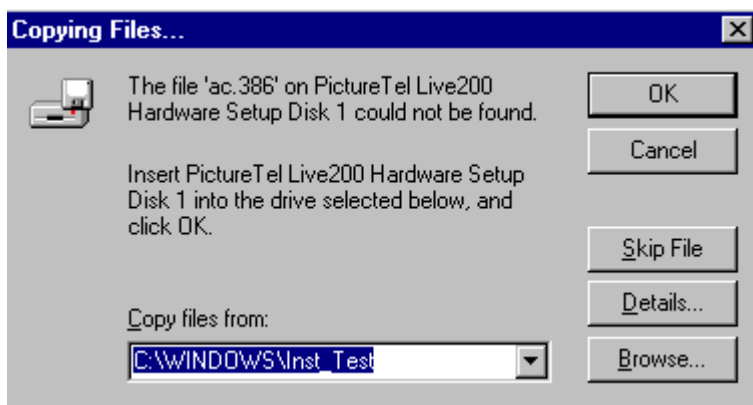
3. If the driver Windows 95 has located is correct, click Finish. If it is not correct, click the Other Locations button to browse for the correct file.

The Insert Disk dialog box appears.



4. Click OK.

The Copying Files dialog box appears.



5. Click Browse.

The Open dialog box appears.

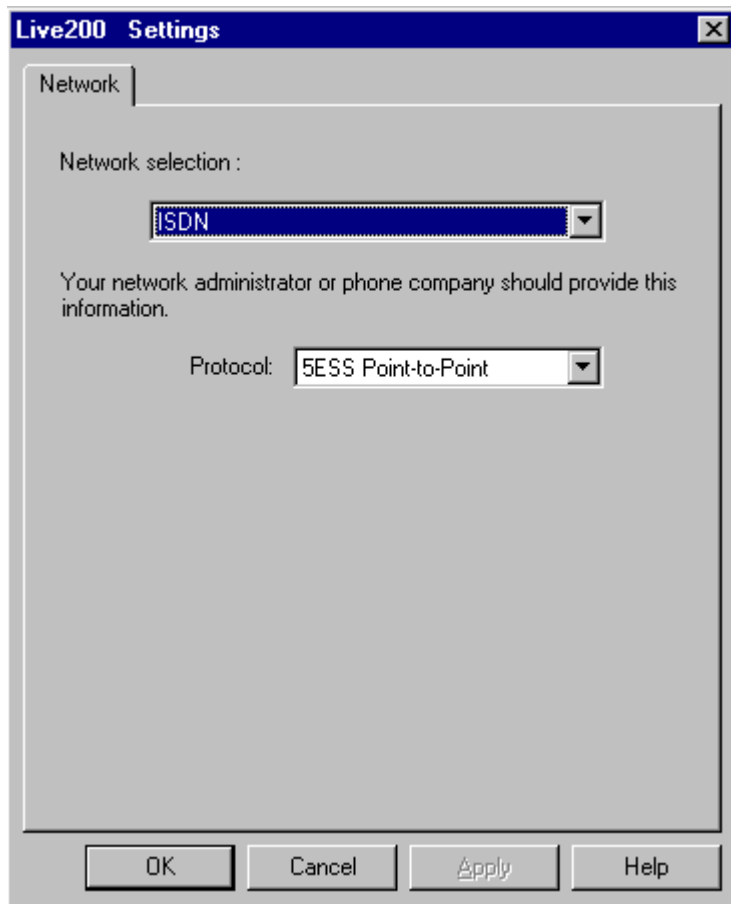
Choose the Lv200Drv directory and highlight the ac.386 file. The filename ac.386 appears in the File Name box.

6. Click OK.

The Copying files dialog box appears.

7. Click OK.

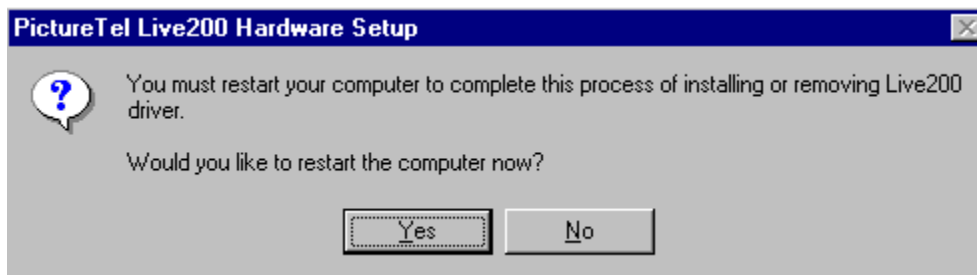
The driver file install process starts. After the files are copied to your hard driver, the Live200 settings dialog box appears.



8. Select an ISDN protocol and click OK.

The PictureTel Settings Change dialog box appears.

- The default setting is 5ESS Point-to-Point. Contact your ISDN provider to find out the correct protocol to use for your ISDN line.
- If you select a protocol such as 5ESS Multipoint, you must enter a Service Provider Identification (SPID).
- If you select a protocol such as NI1, you must enter two SPIDs and two local numbers.
- If you select a protocol such as Euro-ISDN, you must enter 2 MSNs and 2 Number Types. See the online help or the *PictureTel Live200 Product Guide* for detailed information about ISDN protocols. Files are copied to your local drive. When the system software installation is complete, the following dialog box appears.



9. Click Yes.

Your computer automatically restarts Windows 95. Proceed to Installing the Application Software.

---

## Installing the Application Software

- To install the application software:
  1. Click the Start button from the Windows 95 desktop.
  2. Click Run from the Start menu.

The Run dialog box appears.

3. Type the path to **\Lv200App\Disk1\setup.exe** or click Browse to locate the file.
4. Click OK.

The Setup box appears displaying the status of the InstallShield Wizard as it is prepared. The **Welcome to the PictureTel Live200 Setup Program** dialog box appears.



5. Click the Next button.

The PictureTel Live200 Software License Agreement dialog box appears.

6. Read the agreement and click Yes to continue.

The PictureTel Registration dialog box appears.

7. Type your name, company (optional), and the PictureTel Live200 serial number and click the Next button.

The Registration Confirmation dialog box appears.

8. Click Yes if the information you entered is correct.

The Choose Destination Location dialog box appears.

9. Select the destination folder in which you want to install PictureTel Live200. If you are installing the software for the first time, the default folder is C:\Program Files\PictureTel. If you are upgrading the software from a previous release, the default folder is wherever you last installed the software.

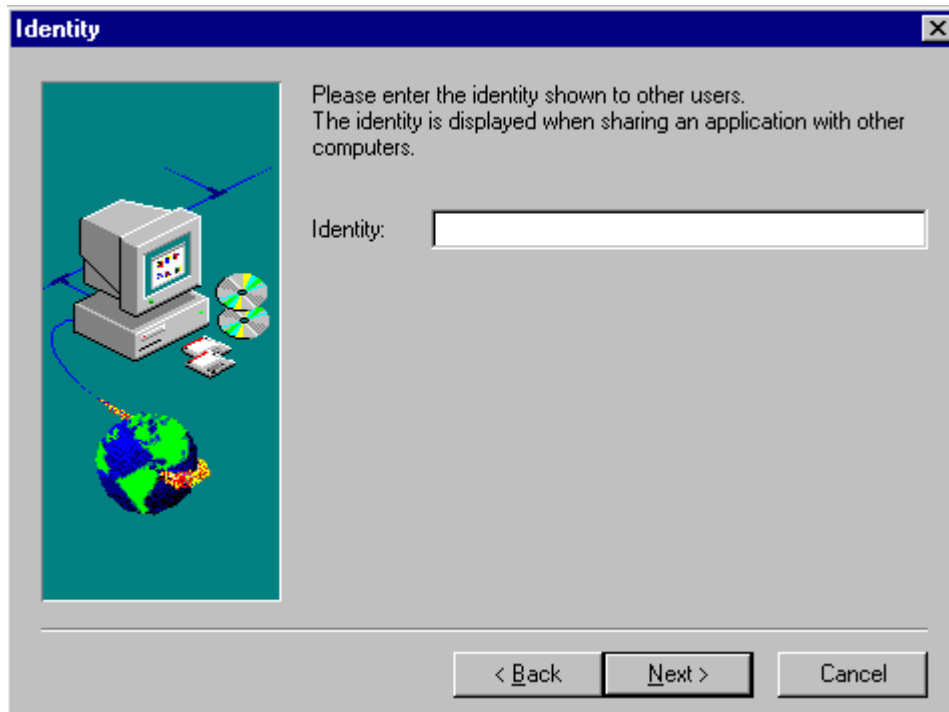
You can click Browse to choose a directory or type a path name.

10. Click Next to continue.

The Folder Selection dialog box appears.

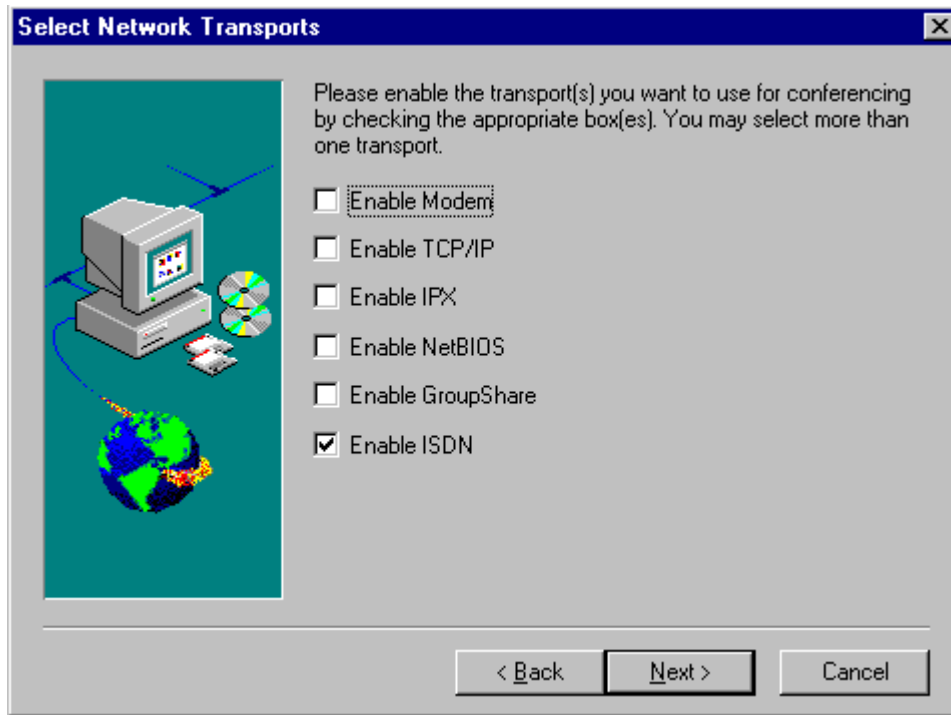
11. Accept the default folder name PictureTel Live200 or type a new one.

The Identity Name dialog box appears. Your identity is shown to other conference attendees during a call.



12. Enter your identity and click Next.

The Select Network Transports dialog box appears.



13. Select the transports you will be using and click Next. Make sure Enable ISDN is checked.

**Enable ISDN** - You **must** enable ISDN to make video calls. You can select another transport to make a data-only call. For example, you might want to share an application with someone who does not have an ISDN line. Both you and the other conference attendee would select the transport that you have in common. If you are not enabling additional network transports, click **Next** to continue with the installation.

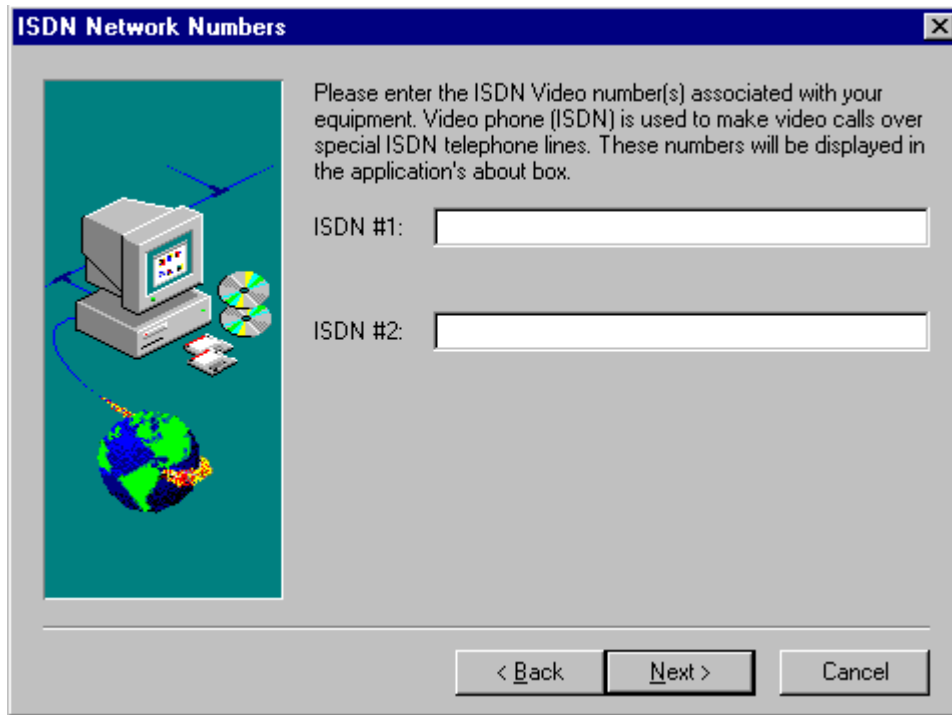
**Enable Modem** - If you have a modem in your computer, you can use it to make data-only calls. Additional screens appear that let you choose the modem you want to use. If you need help choosing a modem, see your System Administrator. Click **Next** to continue with the installation.

**Enable TCP/IP, IPX, or NetBIOS** - If your computer is configured with the TCP/IP, IPX, or NetBIOS transport, you can use those transports to make data-only calls. Select the transport you want to use and click **Next** to continue with the installation.

**Enable GroupShare** - Select the GroupShare transport if you want to make and answer calls through a PictureTel group videoconferencing system, such as the Venue·2000, Concorde·4500, or SwiftSite. To use this transport, your Live200 system must be physically connected to the group videoconferencing system and the system must be configured to work with the Live200. Set the baud rate to match the baud rate of the data port option on the group videoconferencing system. Select the COM port used to connect the Live200 to the group videoconferencing system. For more information, refer to the configuration documentation for your group videoconferencing system.

14. Click Next to continue with the installation.

The ISDN Network Numbers screen appears.



15. Type your ISDN dialing number and click the Next button.

You can enter the ISDN phone number in a variety of ways, for example:

1-(700) 555-1212  
1-700-555-1212  
17005551212

You might need to enter the ISDN number twice, depending on your ISDN configuration. Depending on the protocol you are using, you might also need to enter SPIDs. Contact your ISDN provider for details.

Your ISDN dialing number is entered into a default address book list with your name, and company name. Your ISDN number is also entered in the About PictureTel Live200 dialog box, which is available from the Help menu in the main toolbar.

16. Specify whether or not you want PictureTel Live200 to be copied to your Startup folder.

If you answer "yes," PictureTel Live200 automatically runs every time you start your computer. If you answer "no," no action is taken.

17. Click Yes if you want to view the README file.

The Setup Complete dialog box appears.

18. Do one of the following:

- Click **Yes** if you want to start the Live200 application now.

or

- Click the **Finish** button if you want to return to the Windows 95 desktop without running the Live200 application.

The Live200 software installation process is complete.

---

*Copyright © 1997, PictureTel Corporation. All rights reserved.*